



OXE **DISPLAY** SYSTEM

www.oxe-diesel.com

OXE DISPLAY SYSTEM

FUNCTIONS & TECHNICAL SPECIFICATION

OXE Display System has utilized the most well known and available display hardware on the market and Cimco Marine technicians have developed our own unique software system to give maximum performance, information and setting access possible. Fully compatible with NMEA 2000, OXE displays offer ease of operation in a design adapted for any console.

THE 3.5" DISPLAY UNIT

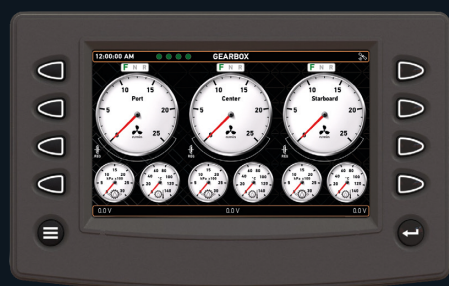


The OXE 3.5" display is a highly flexible and rugged colour CANbus display, using the powerful Freescale iMX 286 (running at 454 MHZ). The 3.5" display is the perfect choice for single installation on smaller, compact craft or for when the operator requires separate display capability for multi installation configurations.

TECHNICAL SPECIFICATION

- QVVA Graphical high resolution 320*240 color TFT LCD
- Fully sealed to IP66 (Front) and IP67 (Back)
- Compact design
- Supports 1 OXE Diesel engine

THE 7" DISPLAY UNIT



The OXE 7" display is full- featured display that integrates vital engine, transmission and diagnostic information into an easy to read operators interface. The 7" display is capable of displaying three separate engines and their respective functions, offers increased diagnostic access and data storage capability.

TECHNICAL SPECIFICATION

- CAN-Based display with rich, full-color graphics
- Bonded, glare-free LCD screen, viewable in direct sunlight
- Rugged design for extreme environments
- Capability to support up to 3 OXE Diesel engines

OUTBOARD DISPLAY COMPARISON

FEATURE	3.5"	7" DISPLAY	
		AVAILABILITY OF: GPS TANK SENDER	
No of engines	1	3	
Battery voltage		•	
Boost pressure	•	•	
Data logger		•	
Distance to empty		•	•
Distance traveled		•	•
ECU Temp		•	
Engine coolant temp	•	•	
Engine information (sw, s/n, etc)		•	
Engine load		•	
Engine oil pressure	•	•	
Engine oil temp	•	•	
Engine speed rpm	•	•	
Exhaust gas temp	•	•	
Fault code indication	•	•	
Fuel level (if tank sender is available)	•	•	
Fuel rail pressure		•	
Fuel rate average per distance		•	•
Fuel rate average per hour		•	
Fuel rate per distance		•	•
Fuel rate per hour	•		
Fuel used	•		
Gear indication (FNR)	•	•	
Gearbox oil pressure	•	•	
Intake manifold temp		•	
Propeller speed		•	
Rudder position (Seastar EPS)		•	
Service reminder		•	
Speed		•	•
Speed average		•	•
Speed maximum		•	•
Throttle position		•	
Time to empty		•	•
Total engine hours	•	•	
Trim (angle)	•	•	
Trolling %		•	
Trolling indication	•	•	

CIMCO
Endurance by Engineering

CIMCO MARINE AB

Metallgatan 17B, SE-262 72 Ängelholm. SWEDEN
info@oxe-diesel.com, www.oxe-diesel.com